

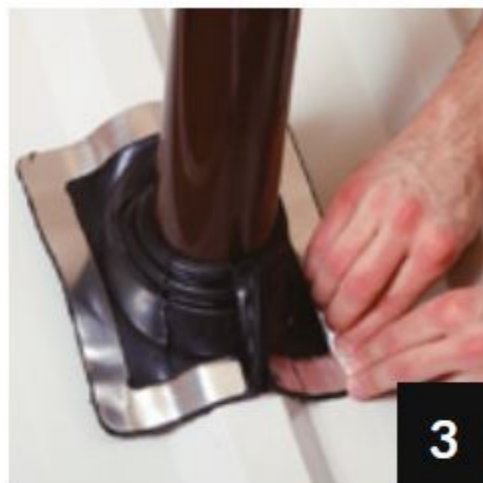
Master Flash® Retrofit



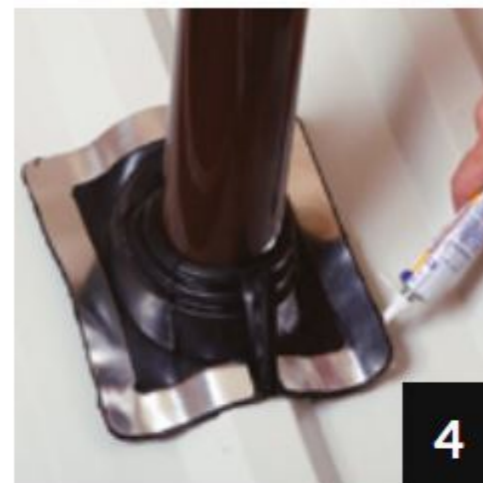
Select an appropriate Master Flash® Retrofit with a pipe range that goes below and beyond fitting. If necessary, follow the lines clearly shown on the flashing and create an opening 10-20% smaller than pipe diameter. Slice down the flange.



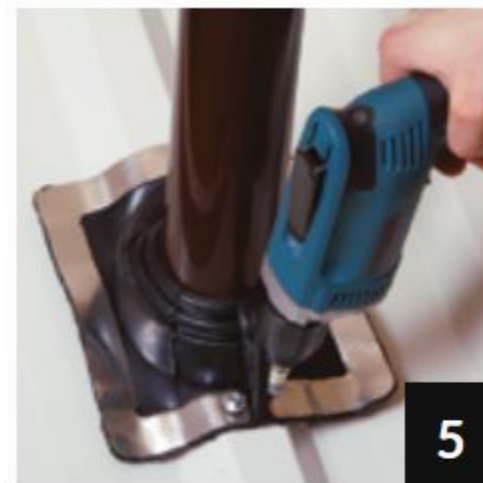
Wrap Master Flash® Retrofit around the pipe and install all snap rivets to seal the flange.



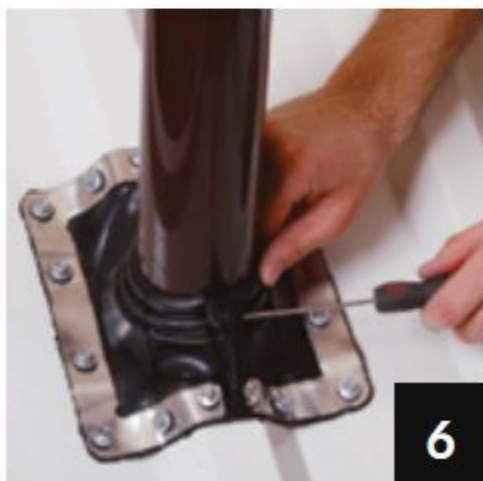
Press Master Flash® Retrofit down, bending it to conform to roof profile or irregularities. A blunt tool will help to form flashing to tight roof angles.



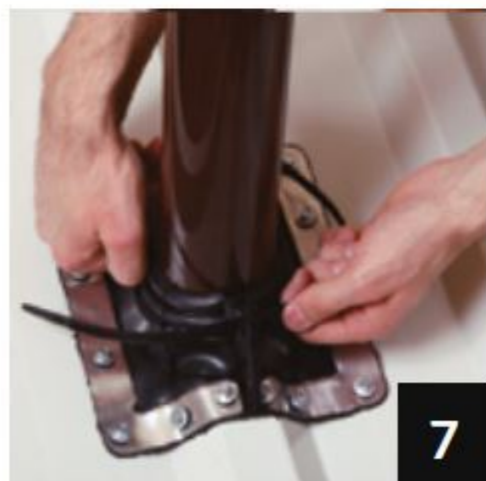
Apply sealant between the base roof and at the top of the flange.



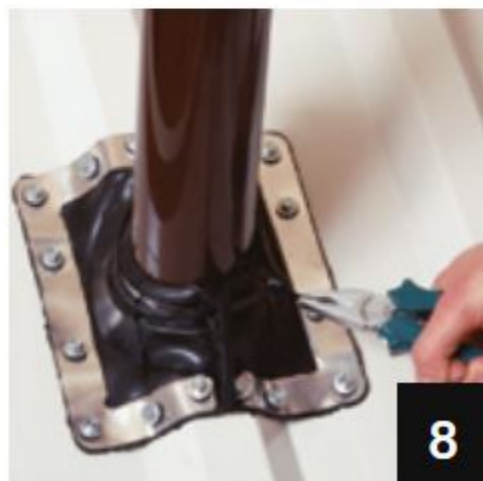
Use fasteners to complete sealing. For installation, fastener spacing may not exceed 1.5" (38 mm).



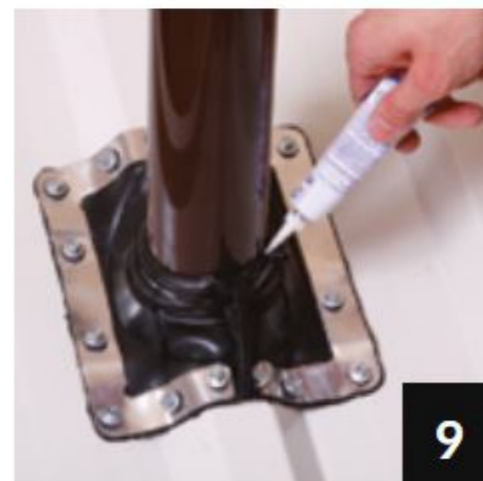
Make a hole in the flange to insert a cable tie or steel band depending on product material.



Slide the cable tie through the hole, ensuring that it is resting on the flashing.



Put the cable or band as tight as it will go.



Additional sealant can be applied between the flashing and the pipe.